

Please join us on May 4, 2011

- 9:00 a.m. Board Meeting
- 11:30 a.m. Registration & Social
- 12:00 p.m. Lunch & Business Meeting
- 12:30 p.m. Keynote
- 1:30 p.m. Adjourn

MCM'S mission is to promote the importance of metalcasting in Minnesota and to be a strong advocate for our industry through effective lobbying on a local, state and federal level

METALCASTERS OF MINNESOTA

MCM

May 4, 2011
Annual Spring
MEETING & LUNCHEON

RESERVATIONS

PLEASE MAKE RESERVATIONS BY:

April 27 @ noon

Call Kristine at IRB Incorporated

651-256-4696

or email

Kristine@irbinc.biz

\$50.00 Registration fee

Includes lunch and program expenses

Payment due May 4th at Registration

cash or check only

METALCASTERS OF MINNESOTA

If your company is interested in becoming a member of MCM, please contact:

Michael Suchy
General Manager
Prospect Foundry

612-331-9282 X233
msuchy@prospectfdry.com

LUNCHEON KEYNOTE SPEAKER

Toby Madden
Regional Economist

Topic
**Manufacturing Activity
Forecast 2011**

May 4, 2011

- 11:30 a.m. Registration
- 12:00 p.m. Lunch /Business Meeting
- 12:30 p.m. Keynote

University Club
420 Summit Avenue, St. Paul

KEYNOTE SPEAKER

Toby Madden

Regional Economist

Manufacturing Activity Forecast 2011



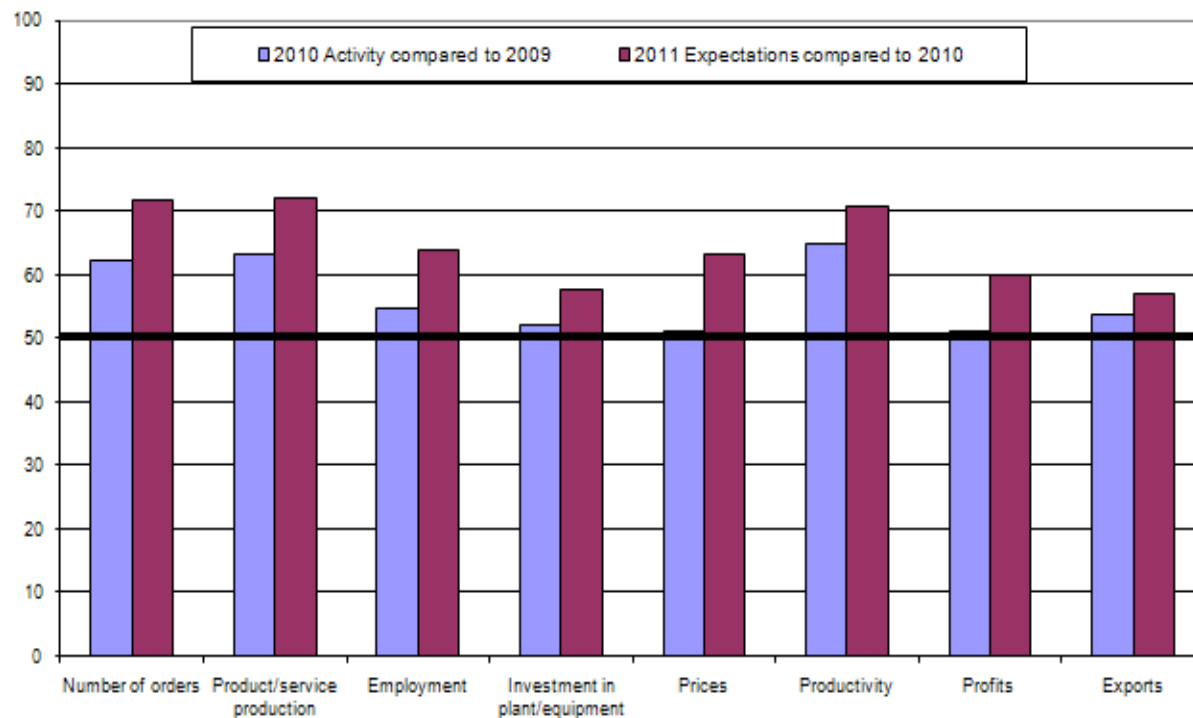
Toby Madden is a regional economist in the public affairs department at the Federal Reserve Bank of Minneapolis. In this position, he writes articles for bank publications and frequently speaks on the district economy.

In addition, Madden is actively involved with the bank's economic education program. Madden joined the Minneapolis Fed in 1995 as a management analyst in the automated clearing house area.

Prior to joining the Fed, Madden worked for five years at TCF Financial Corporation in investments and management reporting and for five years at Ernst and Young as a senior consultant in the financial services industry group.

A native of Minnesota, Madden has a bachelor's degree in accounting and a master's degree in finance from the University of Minnesota. He has taken over 20 masters and Ph. D. level courses in economics at the University of Minnesota. Madden is a certified public accountant and a certified management accountant. Madden is past president of the Minnesota Economic Association and is on the Board of the Institute for Financial Economics.

Manufacturing activity up in 2010; expect increases in 2011*



* Above 50 indicates expansion; below 50 indicates contraction.

Source: Federal Reserve Bank of Minneapolis; Minnesota Department of Employment and Economic Development.